

# WATERSHED PARTNERSHIP MEMBERS

*Voluntary alliances of landowners and other partners protecting forested watersheds for water recharge and conservation values*

## **Kaua'i Watershed Alliance** (144,004 acres)

Ben A. Dyre Family Limited Partnership  
Department of Water of the County of Kaua'i  
Kamehameha Schools  
Kaua'i Ranch, LLC  
Lihue Land Company  
McBryde Sugar Company, Ltd.  
Princeville Corporation  
State Department of Land and Natural Resources  
Grove Farm Company, Incorporated  
State Department of Hawaiian Home Lands  
National Tropical Botanical Garden

## **Ko'olau Mountains Watershed Partnership** (98,737 acres)

Bishop Museum  
City & County of Honolulu Board of Water Supply  
Dole Food Company, Inc.  
Hawai'i Reserves, Inc.  
Kamehameha Schools  
Kualoa Ranch  
O'ahu Country Club  
Queen Emma Land Company  
State Agribusiness Development Corporation  
State Department of Hawaiian Home Lands  
State Department of Land and Natural Resources  
Tiana Partners, et al.  
UH Mānoa/Lyon Arboretum  
US Army  
US Fish & Wildlife Service

## **KMWP Associate Partners**

The Nature Conservancy  
Pacific Cooperative Studies Unit  
State of Hawai'i Department of Health  
US Environmental Protection Agency  
US Forest Service  
USDA Natural Resources Conservation Service  
US Geological Survey

## **East Moloka'i Watershed Partnership** (19,000 acres)

Kalaupapa National Historical Park  
Kamehameha Schools  
Kapualei Ranch  
Kawela Plantation Homeowners Association  
Ke Aupuni Lōkahi Enterprise Community  
Governance Board  
Hawai'i Department of Health  
Maui County  
Maui County Department of Water Supply

Moloka'i-Lāna'i Soil and Water Conservation District  
State Division of Forestry and Wildlife  
The Nature Conservancy \*  
USDA Natural Resources Conservation Service  
US Environmental Protection Agency  
US Fish & Wildlife Service  
US Geological Survey

## **Lāna'i Forest and Watershed Partnership** (20,000 acres)

Castle & Cooke Resorts, LLC\*  
County of Maui  
Hui Mālama Pono O Lāna'i  
Lāna'i Water Advisory Committee  
Maui County Board of Water Supply  
Moloka'i-Lāna'i Soil and Water Conservation District  
State Department of Land and Natural Resources, DOFAW and CWRM  
The Nature Conservancy \*  
USDA Natural Resources Conservation Service  
US Fish & Wildlife Service

## **West Maui Mountains Watershed Partnership** (48,000 acres)

County of Maui  
Kahoma Land Company LLC  
Kamehameha Schools  
Ka'anapali Land Management Corp.\*  
Māhila Land Company LLC  
Maui County Department of Water Supply  
Maui Land & Pineapple Co., Inc.\*  
State Department of Land and Natural Resources  
The Nature Conservancy \*  
Wailuku Water Company, LLC

## **East Maui Watershed Partnership** (100,000 acres)

East Maui Irrigation Co., Ltd.  
County of Maui  
Haleakalā National Park  
Haleakalā Ranch Co.\*  
Hāna Ranch Partners, LLC  
State Department of Land and Natural Resources  
The Nature Conservancy \*

## **Leeward Haleakalā Watershed Restoration Partnership** (43,000 acres)

County of Maui  
Haleakalā National Park  
Haleakalā Ranch

Kamaole Ranch  
Kaonoulu Ranch  
Kaupo Ranch  
Nu'u Mauka Ranch  
State Department of Hawaiian Home Lands  
State Department of Land and Natural Resources  
Ulupalakua Ranch  
Jerry Thompson  
John Zwaanstra

## **Kohala Watershed Partnership** (65,500 acres)

Hawai'i County Department of Water Supply  
Kahuā Ranch, Ltd.  
Kamehameha Schools  
Laupāhoehoe Nui, LLC  
Parker Ranch, Inc.  
Ponoholo Ranch, Ltd.  
State Department of Hawaiian Home Lands  
State Department of Land and Natural Resources  
Surety Kohala Corp.  
The Nature Conservancy \*  
Queen Emma Land Company

## **Three Mountain Alliance** (1,116,300 acres)

Kamehameha Schools  
National Park Service  
State Department of Land and Natural Resources  
State Department of Public Safety  
US Fish & Wildlife Service  
US Forest Service  
US Geological Survey, Biological Resources Division  
The Nature Conservancy \*  
USDA Natural Resource Conservation Service

*\*Also a participant in the DLNR Natural Area Partnership Program*

## **For more information contact:**

Randy Kennedy  
Native Resources Program Manager  
State Division of Forestry and Wildlife  
(808) 587-0054  
Randall.W.Kennedy@hawaii.gov

Mark Fox  
Director of External Affairs  
The Nature Conservancy  
(808) 537-4508  
mfox@tnc.org

Or visit [www.hawp.org](http://www.hawp.org)



PETER MENZEL

# Hawai'i Association of Watershed Partnerships

*Working to ensure our future water supply*

# HAWAII ASSOCIATION OF WATERSHED PARTNERSHIPS

*Voluntary alliances of landowners and other partners protecting forested watersheds for water recharge and conservation values*

## Our Water Supply is at Risk

Forested lands cover 1.5 million acres, or more than one-third of our state. These forests are our islands' primary watersheds, supplying us with hundreds of billions of gallons of fresh water each year. In no other state is the relationship between water and forest cover more closely interwoven than in Hawaii, yet today our forests are slowly degrading from an onslaught of invasive plants and animals, fire, disease, and inappropriate human use. Minimizing these threats will protect both our native forests and our water supply for future generations. The Hawaii Association of Watershed Partnerships was formed to address this need.

## A Billion Dollar Resource

Hawaii's forests capture and conserve water, protect the health of our reefs and beaches, clean and cool our air, and are our best defense against flood and drought. Consider the cost of replicating any one of these essential services through feats of technology or engineering and you begin to appreciate the contribution our forests make to our economy and quality of life. How much are our forests worth? A study by the University of Hawaii estimated the value of the Ko'olau Mountain forests – one of 12 major watershed areas in the state – to be between \$7.4 and \$14 billion.

## A Lack of Investment

Few places are more renowned for their natural environment than Hawaii. Yet as a state we devote little money to its protection and take for granted the many benefits it provides. The State of Hawaii, which is charged with stewardship of almost half of the islands' forested lands, currently spends less than 1% of its budget to protect and manage all of its natural and cultural resources. Hawaii's state-owned forest reserve system is the 11<sup>th</sup> largest in the country, yet we rank almost last in spending.

## Support Watershed Protection

The State's Natural Area Reserve Fund is the only assured source of annual funding to protect and manage our forested watersheds. These state funds are leveraged to secure competitive federal grants as well as county and private investment in forest protection. A top priority of the Hawaii Association of Watershed Partnerships is to ensure that the State's Natural Area Reserve Fund is fully supported by the State Legislature.

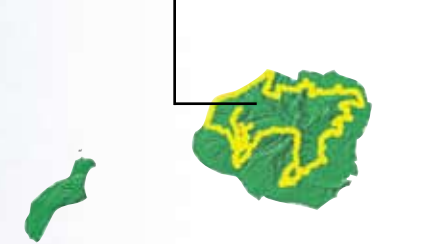
## Our Forests are Our Future

As a society we have a great responsibility, and a practical need, to protect our future water supply. Fresh water is not an unlimited resource, and its ready availability, quality and sustainability are linked to the health of our forested watersheds. When we fail to protect our forests, we put our future prosperity and quality of life at risk.

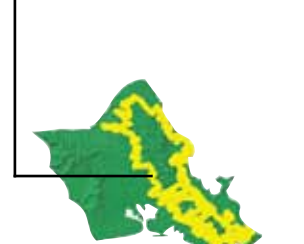
### WORKING TO ENSURE OUR FUTURE WATER SUPPLY

- Nine member partnerships on six islands
- More than 60 public and private partners represented
- Over one million acres of forested lands identified for management
- Eight island-based watershed management plans completed
- More than 40 miles of protective fences constructed
- Thousands of invasive plants removed
- Over 30,000 native and rare plants outplanted
- Over 1,500 students, teachers, and citizen volunteers reached

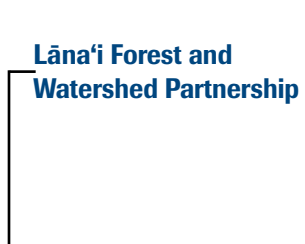
### Kaua'i Watershed Alliance



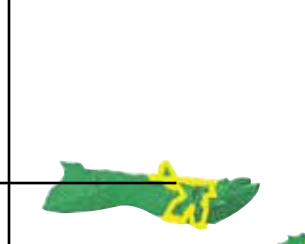
### Ko'olau Mountains Watershed Partnership



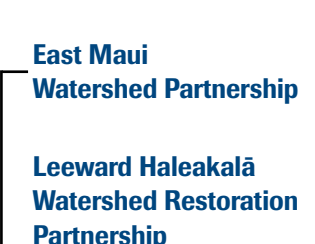
### East Moloka'i Watershed Partnership



### Lāna'i Forest and Watershed Partnership



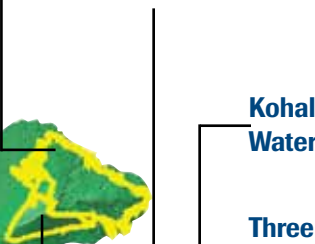
### West Maui Mountains Watershed Partnership



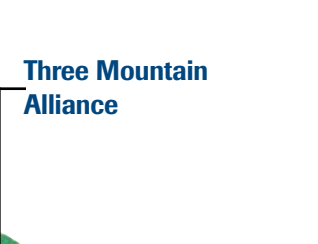
### East Maui Watershed Partnership



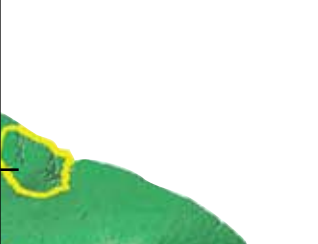
### Leeward Haleakalā Watershed Restoration Partnership



### Kohala Watershed Partnership



### Three Mountain Alliance



### HAWAII ASSOCIATION OF WATERSHED PARTNERSHIPS

The Hawaii Association of Watershed Partnerships (HAWP) was established in 2003 to build public and private support for watershed protection. More than 60 public and private partners – representing nine Watershed Partnerships and six islands – belong to the Association. Together they are working to protect over one million acres of critical forestlands. Through cooperative fundraising, the Association seeks to develop the capacity of island-based Watershed Partnerships to manage and protect our watershed forests.

For more information on HAWP or to find out the latest information on each partnership, go to [www.hawp.org](http://www.hawp.org).



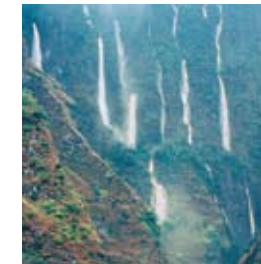
RICHARD A. COOKE III



ERIC NISHIYASHI



RANDY BARTLET



PETER MENZEL



GRAHAM OSBORNE

